

Full Automatic Sample Preparation System for POPs Analysis

The Best Partner of
Energy, Water and Environment

MIURA

GO-EHT



Food sample

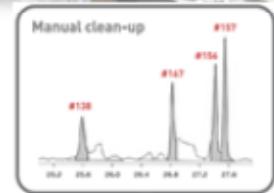
Environmental sample



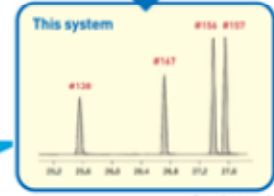
Dioxin, PCB
POPs



Purification

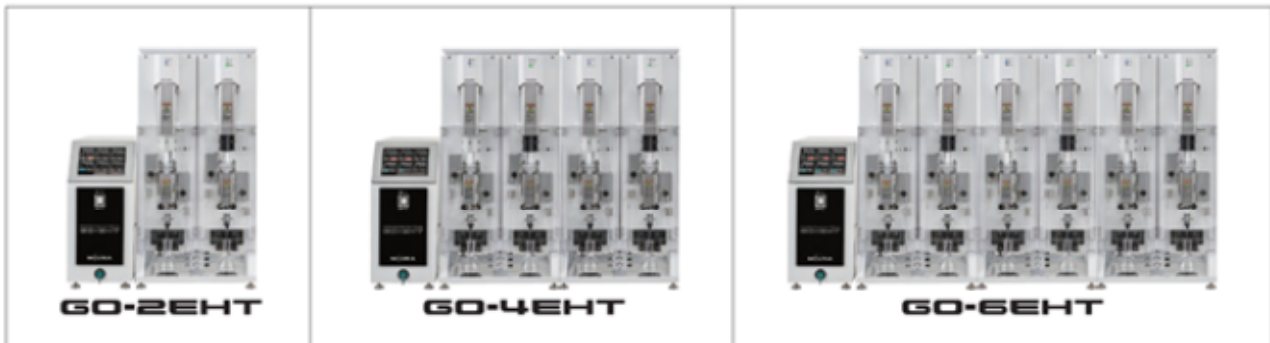


The interference disappeared



GC-MS measurement

Specifications



Item	Units	GO-2EHT	GO-4EHT	GO-6EHT
Installation method	—	Desktop type		
System component	—	Controller x 1	Controller x 1	Controller x 1
	—	Processing Module x 1	Processing Module x 2	Processing Module x 3
	—	A processing module consists of two processing units.		
Sample preparation capacity	sample	up to 2	up to 4	up to 6
Solvent consumption (Hexane)	mL/sample	90 (+ 20 for substitution in the tubing)		
Solvent consumption (Toluene)	mL/sample	5 (+ 10 for substitution in the tubing)		
Controller weight	kg	22.3		
Processing module weight	kg	46.3	92.6	138.9
External dimensions of controller [W x D x H]	mm	220 x 590 x 490		
External dimensions of processing module [W x D x H]	mm	410 x 535 x 820	820 x 535 x 820	1230 x 535 x 820

MIURA CO.,LTD.

Miura Institute of Environmental Science

864-1 Hojotsuji, Matsuyama, Ehime 799-2430, JAPAN

Email MIES@miuraz.co.jp